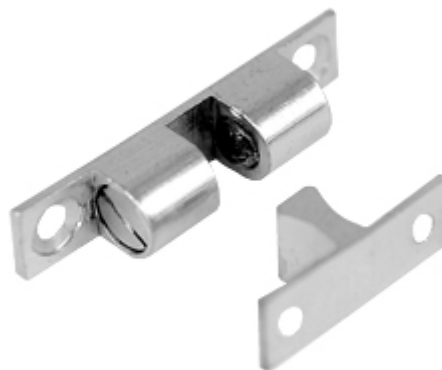




Friction Catch 1718



Product Specifications

Number	1718
Dimensions	3/8" x 1-7/8" Body, 3/4" x 1-1/8" Stirke
Ansi	B13302
Shelf pack	20
Material	Cast Brass
Features	Polybagged
Fasteners	4 ea. #5 x 1/2" SMS
Finishes	605, 609, 613, 619, 620, 625, 626
Competitor part	CL22, 802

P.O. Box 929 - Sterling, MA 01564-0929 - TEL: 978-422-3377 FAX: 978-422-3467
EMAIL: info@don-jo.com (mailto:info@don-jo.com), - <http://www.don-jo.com> (<http://www.don-jo.com>)